

CATALOGO

SISTEMI DI ALIMENTAZIONE

UPS
GRUPPI DI CONTINUITA'
INVERTER DC/AC
CONVERTITORI DI FREQUENZA
STAZIONI DI ENERGIA AC/DC
CONDIZIONATORI DI RETE
STABILIZZATORI
SOCCORRITORI
BATTERIE

**GRUPPI DI CONTINUITA'
MONOFASE & TRI/MONOFASE**



SHT-POWER

Sede e Magazino
VIA SALVO D'ACQUISTO 50/52
20037 PADERNO DUGNANO
E-Mail info@shtpower.com
shandy@shandy.it

Tel. **39.02.9103788
Fax **39.02.9102517
Siti internet www.shtpower.com
www.eurpow.com



THE COMPANY

SHT-POWER sas is one of the leading companies in the design and production of power system, is part of an international group, with one of the most important organization in the industry. Precursors in the application of the microprocessor in the multifunctional UPSs and design solar power UPS, one of the first companies to acquire the EN ISO 9001. Production in Italy and Asia, with SHANDY and EPC brand.

THE ACTIVITY

SHT-POWER designs and manufactures uninterruptible power supply units (UPS) in all specific areas:

CED, TELECOMMUNICATION SYSTEM OPERATING ROOM, AUTOMATION SYSTEMS, AIRPORTS, ELECTRICAL CENTERS, INDUSTRIES, ETC

RANGE OF PRODUCTS

The range of products, ranging from 300VA to 400VA (from 10kva to 400kva in parallel up to 8 units), SHT-POWER offers a solution to every problem while also providing CUSTOM solutions on specific request; produces also Frequency Converters, Stabilizers, DC-AC Inverters for Solar and AD-DC Power Supplies.

PRODUCTS WITH EPC LOGO

- UPS interactive with AVR, telephone line protection, control and shutdown program, powers from 450 to 2000 VA
- UPS interactive sinusoidals, with AVR line telephone protection, control and shutdown program, poker from 750 to 2000 VA.

- On-line UPS double conversion, controller by a microprocessor, Power Factor Corrector (PCF) in input, control and shutdown program, power from 1000 VA to 10 KVA
- AC/DC Inverter, input 12, 24, 48, 110 Vdc, output 230 Vac, power 150W ÷ 7000W
- AC/DC CONVERTER AND BATTERY CHARGER input 115, 230 Vac, Output 12, 24, 48, 110 Vdc.

FREQUENCY CONVERTERS

- Single-phase/single phase, 50/60 Hz Frequency converter, three phase/single phase three phase/three phase with fixed voltage with powers from 1KVA to 300 KVA
- single phase 50/60Hz frequency converter with variable output voltage 0/270V from 20 to 30A
- three phase/ single phase 50/60Hz frequency converter with variable output voltages from 30 to 65A
- three phase/ three phase 400Hz frequency converter with output voltage 115Vza

SHANDY LOGO PRODUCTS:

MEDIUM AND BIG POWER UPS, ON-LINE DOUBLE CONVERSION

- single phase/single phase UPS with powers 10kVA ÷ 30kVA
- three phase/single phase UPS with power 10 kVA, 30 kVA

- three phase/three phase UPS with powers 10kVA ÷ 400kVA

STABILISERS

- Electronical and electromechanical single-phase 300 to 10 KVA
- three-phase electromechanics, power from 6 to 500.KVA

TECHNICAL ASSISTANCE CENTERS

SHT POWER offers its customers, their SERVICE network in all regions of Italy, providing a 24h telephone and on-side service

EV - VENUS

EIML – IMALAIA

**INTERACTIVE Static UPS
to sinusoidal wave and sinusoidal simulated**

**450 – 650 – 850 VA****1000 VA****1500 – 2000 - 3000 VA**

UPS

Line Interactive single phase

Sinusoidal Simulated wave

EV – VENUS

The EV – VENUS series is available from 450VA to 3000VA power with digital technology; This serie is suitable for powering any electrical and electronic system, in case of electricity supply interruption by the inverter or sudden change in voltage by AVR

FEATURES

- Compact Size
- Excellent microprocessor control guarantees high reliability
- Network Stabilization with AVR System
- Auto-restart when returns the network
- Simulated sine wave
- Battery charging in operation also when the UPS is off
- Cold start function
- USB communication port - RJ-11 telephon protection port

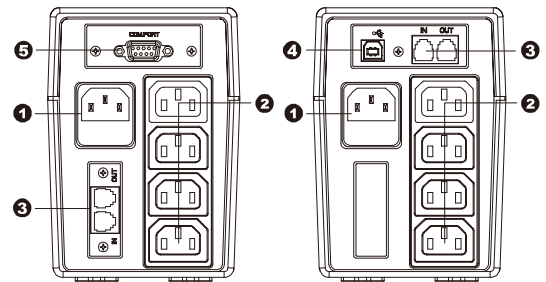
COMMUNICATION

Software for all operating system and network environments

24 MONTHS WARRANTY

RECOMMENDED TO PROTECT:

Pc, automation machines



1 – Input Network Connector 2 – Output Connector
 3 - RJ11 Connector 4 – USB
 5 - RS232

EV (VENUS) 450/650/850 LINE INTERACTIVE UPS

MODEL	EV 450	EV 650	EV 850
POWER	450 VA / 240 W	650 VA / 360 W	850 VA / 480 W
INPUT			
Voltage	110/120 VAC or 220/230/240 VAC		
Voltage Range	81-145 VAC / 162-290 VAC		
Frequency Range	60/50 Hz (auto setting)		
OUTPUT			
AC Voltage regulation (Batt. Mode)	±10%		
Frequency tolerance (Batt. Mode)	60 Hz o 50 Hz ±1 Hz		
Transfer time	2-6 ms, 10ms max.		
Wave form (Batt. Mode)	Simulated sine wave		
BATTERY			
Type & quality battery	12 V/4.5 AH x 1	12 V/7 AH x 1	12 V/9 AH x 1
Backup time (1 PC charged @ 120 W)	5 min.	10 min.	15 min.
Typical recharging time	4-6 hours for recharging to 90% of capacity		
INDICATORS			
AC Mode	Fixed green led		
Battery Mode	Intermittent green led		
PROTECTION			
Full Protection	Overload of power, discharge and overcharge of batteries		
ALARMS			
Battery Mode	Sound every 10 seconds		
Low battery	Sound every second		
Overload	Sound every 0.5 seconds		
Battery replacement Alarm	Sound every 2 seconds		
Fault	Continuous sound		
DIMENSIONS AND WEIGHTS			
Dimensions, P x L x H (mm)	287 x 100 x 142		
Net weight (kg)	3,55	4,25	4,9
ENVIRONMENTAL DATA			
Humidity	0-90 % RH @ 0- 40°C (without condensation)		
Noise level	< 40dB		
INTERFACE			
USB/RS-232 Port	Supports Windows 98 SE/ME/NT 4.x/2000/2003/XP/Vista/2008		

* Product specifications may be subject to change without notice



EV (VENUS) 1000/1500/2000 LINE INTERACTIVE UPS

MODEL	EV 1000	EV 1500	EV 2000
POWER	1000 VA / 600 W	1500 VA / 900 W	2000 VA / 1200 W
INPUT			
Voltage	110/120 VAC or 220/230/240 VAC		
Voltage Range	81-145 VAC / 162-290 VAC		
Frequency Range	60/50 Hz (auto setting)		
OUTPUT			
AC Voltage regulation (Batt. Mode)	±10%		
Frequency tolerance (Batt. Mode)	60 Hz o 50 Hz ±1 Hz		
Transfer time	2-6 ms, 10ms max.		
Wave form (Batt. Mode)	Simulated sine wave		
BATTERY			
Battery Type & quantity	12 V/7 AH x 2	12 V/9 AH x 2	12 V/9 AH x 2
Backup time (1 PC charged @ 120 W)	30 min.	40 min.	50 min.
Typical charging time	4-6 hours for recharging to 90% of capacity		
INDICATORS			
AC mode	Green led on	Green led on & from 2° to 5° green leds light up gradually indicating the load level	
Battery mode	Yellow Led Intermittent	Yellow Led Intermittent & from 2° to 5° green Leds turn off gradually indicating the battery charge level	
Fault	Red Led On	Red Led On	
PROTECTION			
Full Protection	Power's overload, discharge and overcharge of batteries		
ALARMS			
Battery mode	Sound every 10 seconds		
Low Battery	Sound every second		
Overload	Sound every 0.5 seconds		
Battery to be replaced	Suono ogni 2 secondi		
Fault	Continuous sound		
DIMENSIONS AND WEIGHT			
Dimensions, P x L x H (mm)	350 x 146 x 160	397 x 146 x 205	
Net weight (kgs)	8,0	11,1	11,5
ENVIRONMENTAL DATA			
Humidity	0-90 % RH @ 0- 40°C (without condensation)		
Noise	< 40dB		
INTERFACE			
USB/RS-232 Port	Supports Windows 98 SE/ME/NT 4.x/2000/2003/XP/Vista/2008		

* Product specifications may be subject to change without notice



EV (VENUS) 3000 LINE INTERACTIVE UPS

MODEL	EV 3000
POWER	3000 VA / 1800 W
INPUT	
Voltage	220/230/240 VAC
Voltage Range	162-290 VAC
Frequency Range	60/50 Hz (auto setting)
OUTPUT	
Voltage	220/230/240 VAC
AC Voltage regulation (Batt. Mode)	±10%
Frequency tolerance (Batt. Mode)	60 Hz o 50 Hz ±1 Hz
Transfer time	2-6 ms, 10ms max.
Wave form (Batt. Mode)	Simulated sine wave
BATTERY	
Type & quantity of batteries	12 V/9 AH x 4
Backup time (1 PC carico @ 120 W)	120 min.
Typical charging time	4-6 hours for recharging to 90% of capacity
INDICATORS	
Display LCD	On-line Function; Battery Function ; Battery Level; Input and Output Volt; Overload; Fault; Low Battery
PROTECTIONS	
Full Protection	Power's overload, discharge and overcharge of batteries
ALARMS	
Battery mode	Sound every 10 seconds
Low battery	Sound every second
Overload	Sound every 0.5 seconds
Battery to be replaced	Suono ogni 2 secondi
Fault	Continuous sound
DIMENSIONS AND WEIGHTS	
Dimensions, P x L x H (mm)	495 x 150 x 250
Net weight (kgs)	25
ENVIRONMENTAL DATA	
Humidity	0-90 % RH @ 0- 40°C (without condensation)
Noise	< 40dB
INTERFACE	
USB/RS-232 Port	Supports Windows 98 SE/ME/NT 4.x/2000/2003/XP/Vista/2008

* Product specifications may be subject to change without notice



750 – 1000 VA



1500 – 2000VA

UPS Line Interactive single phase Sinusoidal pure wave EIML – IMALAIA

The EIML – IMALAIA series is available from 750 VA to 2000VA power with digital technology; This serie is suitable for powering any electrical and electronic system, in case of electricity supply interruption by the inverter or sudden change in voltage by AVR

FEATURES

- The high quality of the microprocessor ensures high reliability
- Network Stabilization with AVR System
- Battery charger in operation also when the UPS is off
- Auto-restart when returns the Network
- Pure Sinusoidal
- Cold start function (ignition without net)
- Built-in protection for USB port and RJ-45

COMMUNICATIONS

Software for all operating system and network environments, UPSILON 2000 Supervision and shutdown platform

24 MONTHS WARRANTY

RECOMMENDED TO PROTECT:

Server, MT Switches (Medium Voltage Cabs), Security System



EIML (IMALAIA) 750/1000/1500/2000 UPS LINE INTERACTIVE SINUSOIDAL

MODEL	EIML 750	EIML 1000	EIML 1500	EIML 2000
POWER	750 VA/ 525 W	1000 VA / 700 W	1500 VA / 1050 W	2000 VA / 1400 W
INPUT				
Voltage	110/120 VAC or 220/230/240 VAC			
Voltage Range	81-145 VAC /162-290 VAC			
Frequency Range	60/50 Hz (auto setting)			
OUTPUT				
AC Voltage regulation (Batt. Mode)	±5%			
Frequency tolerance (Batt. Mode)	50 Hz o 60 Hz ± 1 Hz			
Transfer time	Typical 2-6 ms, 10ms max.			
Wave form in Batt. mode	Simulated sine wave			
BATTERIES				
Type & quantity (Yuasa or CSB)	12 V / 9 AH x 1 pc	12 V / 7AH x 2 pcs	12 V / 9 AH x 2 pcs	12 V / 11 AH x 2 pcs
Backup Time (Half Load)				
Typical recharging time	6 hours for recharging to 90% of the capacity			
INDICATORS				
LCD Display	AC Mode, Battery Mode, Load Level, Battery Level, Input Volt , Output Volt, Overload, Fault, Low Battery			
PROTECTIONS				
Full Protection	Overload of power, discharge and overload batteries			
ALARMS				
Battery Mode	Sounds every 10 seconds			
Low battery	Sounds every second			
Overload	Sounds every 0.5 seconds			
Batteries to be replaced	Sounds every 2 seconds			
Fault	Continuous sound			
DIMENSIONS AND WEIGHTS				
Dimensions, P x L x H (mm)	350 x 146 x 160		397 x 146 x 205	
Net weight (kgs)	5,2	8,3	11,3	12,4
ENVIRONMENTAL DATA				
Operating Humidity	0-90 % RH @ 0- 40°C (without condensation)			
Noise	< 45dB			
INTERFACE				
USB Port	Supports Windows 98 SE/ME/NT 4.x/2000/2003/XP/Vista/2008			
Optional RS-232 Port				

* Product specifications may be subject to change without notice

EG1 – GALAXY 1

**ON-LINE Statics UPS
double conversion to sinusoidal wave**



UPS

**On-Line single phase
Sinusoidal pure wave**

EG1 - GALAXY 1



The EGL – GALAXY series is available in the 1KVA to 10KVA power with On-Line double digital control conversion technology ; This series, for its versatility, is suitable for powering any electrical and electronic system even in critical situation, as well as being able to use it as 50/60 Hz frequency converter or using power generators

FEATURES

• DOUBLE CONVERSION UPS

A real DOUBLE CONVERSION UPS that will provide a perfect current, for complete high quality protection for your sensitive devices, such as Network, Small Calculation Centers, Servers, Telecommunications, Healthcare/Hospital Appliances and industrial application in general

• OUTPUT POWER FACTOR ϕ 1.0

Comparing this UPS ON-LINE line with current marketing competition, we can say that GALAXY UPSs have the best output power factor 1,0. They offer high performance and efficiency for critical applications.

•LARGE INPUT RANGE (110 V -300 V)

Galaxy is able to provide stable and clean current to the equipment also connected in very critical and unstable environments



1000 – 1500 - 2000 - 3000 VA

6 – 10 KVA

•PROGRAMMABLE OUTPUTS

With programmable outputs sockets, the user can easily control part of the load connected to the UPS. During power outages, this feature allows the user to increase battery autonomy and dedicate it to the exclusive protection of some critical appliances, interrupting power supply to non-essential equipment.



Programmable sockets (P1)
- connect non-essential devices

• 50/60 Hz FREQUENCY CONVERTER FUNCTION

Blocks the output frequency at 50Hz or 60Hz regardless of the input frequency and delates the By-Pass

• Emergency Power Off (EPO) FUNCTION

This function serves to the shutdown of the UPS from the staff in case of fire and other situation of emergency.

• SNMP+USB+RS-232 MULTIPLE COMMUNICATIONS

This function allows to use the communication from all USB, RS-232 and SNMP ports simultaneously.

• BATTERY CHARGER STUDIED FOR OPTIMIZE THE PERFORMANCE OF BATTERIES.

The GALAXY 1-3K series is equipped with a 2 steps battery charger for maximum autonomy. It also regulated the charging voltage according to working temperature. All these features have been designed to extend the life of the batteries assembled in the UPS.

. UPS GALAXY 6-20K are equipped with a 3 steps extensible battery charger to optimize battery performance. This feature extends the autonomy



and optimizes the battery recharging time, and the battery charge extension is also essential for recharging the batteries with the highest power used to gain long autonomy.

• MANUAL BY-PASS FOR THE MAINTENANCE ON UPS FROM 6K FORWARD

Manual By-Pass, ensures the lack of voltage inside of the UPS for maintenance, ensuring power to the connected equipment.

• REDUNDANT PARALLEL FUNCTION FOR UPS FROM 6 TO 10K

The GALAXY 6 and higher poker can work in parallel redundant up to 3 units, which increate power capability, uninterrupted service safety.

• AVAILABLE ALSO IN THE 19”RACK MOUNTING VERSION

The series GALAXY offers also a range of UPS 1-3K in RACK 19” version, ideal for the **“backup power protection solution”** for servers, rescue systems, network equipment and others type of loads.

• Power Factor Correction ON ALL THREE/SINGLE PHASE 10KVA TO 20KVA

The PFC improbe the quality of the absorbed current and increases the energy yeld, with the consequent economics saving.

COMMUNICATION

Software for all operating systems and network environments, VIEWPOWER – VIEWPOWER PRO Supervision and Shutdown platform.

WARRANTY 24 MONTHES





EG1 (GALAXY1) - 1K/1.5K/2K/3K monofase ONLINE UPS DOUBLE CONVERSION

MODEL		EG1 1K (S)	EG1 1.5K (S)	EG1 2K (S)	EG1 3K (S)	
POWER		1000 VA / 1000 W	1500 VA / 1500 W	2000 VA / 2000 W	3000 VA / 3000 W	
INPUT						
Voltage Range	Low line transfer	160 VAC / 140 VAC / 120 VAC / 110 VAC \pm 5 % or 80 VAC / 70 VAC / 60 VAC / 50 VAC \pm 5 % (Based on load percentage 100% - 80 % / 80 % - 70 % / 70 - 60 % / 60 % - 0)				
	Low line comeback	175 VAC \pm 5 % or 85 VAC \pm 5 %				
	High line transfer	300 VAC \pm 5 % or 150 VAC \pm 5 %				
	High line comeback	290 VAC \pm 5 % or 145 VAC \pm 5 %				
Frequency Range		40 Hz ~ 70 Hz				
Phase		Single phase with ground				
Power Factor P.F.		\geq 0.99				
OUTPUT						
AC Voltage regulation (Batt. Mode)		\pm 3%				
Frequency Range (Synchronized Range)		47.5Hz ~ 52.5 Hz or 57Hz ~ 63 Hz				
Frequency Range (Batt. Mode)		50 Hz \pm 0.25 Hz or 60Hz \pm 0.3 Hz				
Current Crest Ratio		3:1				
Harmonic Distortion		\geq 2 % THD (Linear Load) \geq 4 % THD (no-linear load)				
Transfer Time	AC Mode to Battery Mode	Zero				
	Inverter to Bypass	4 ms (Typical)				
Wave Form (Batt. Mode)		Pure sinewave				
EFFICIENCY						
AC mode		~ 89%		~ 91%		
Battery Mode		~ 90%				
BATTERY						
Standard Model	Battery Type	12 V / 7 Ah	12 V / 9 Ah	12 V / 7 Ah	12 V / 9 Ah	
	Numbers	3	3	6	6	
	Typical recharging time	4 hours to 90% of capacity				
	Charging current (max.)	Default 2 A max 12 A settable				
Charging Voltage		41.0 VDC \pm 1%		82.1 VDC \pm 1%		
(S) long run Model	Battery Type	It depends on the capacity of the external batteries according to the required autonomy				
	Numbers					
	Typical charging time	Default 2 A max 12 A settable				
	Charge current (max.)	41.0 VDC \pm 1%		82.1 VDC \pm 1%		
INDICATORS						
LCD Panel		UPS Status, Load Level, Battery Level, Input/Output Voltage, Bounce Time, Fault Condition				
ALARMS						
Battery mode		Sounds every 5 seconds				
Low battery		Sounds every 2 seconds				
Overload		Double sound every second				
Fault		Continuous sound				
DIMENSIONS E WEIGHTS						
Tower case	Standard Model	Dimensions , P x L x H (mm)	397 X 145 X 220		421 X 190 X 318	
		Net weight (kg)	13,00	14,60	25,20	28,00
	(S) Long run Model	Dimensions, P x L x H (mm)	397 X 145 X 220		421 X 190 X 318	
		Net weight (kg)	7,00		12,30	
ENVIRONMENTAL DATA						
Operating Humidity		20-90 % RH @ 0- 40°C (Without condensation)				
Noise		< 50dBA @ 1 Metro				
INTERFACE						
Smart RS-232/USB		Windows family, Novell, Linux and FreeBSD				
Optional SNMP		Power management per SNMP manager e web browser				

* (S) Identifies lon-lasting models

* Product specifications may be subject to change without notice



EG1 (GALAXY1 - 6K/10K monofase ONLINE UPS DOUBLE CONVERSION

MODEL		EG1 6K (S)	EG1 10K (S)
PHASE		Single phase Input/Single Phase Output	
POWER		6000 VA / 6000 W	10000 VA / 10000 W
INPUT			
Voltage Range	Low Line transfer	176 VAC @ 100% of the load 110 VAC @ 50% of the load	
	Low Line comeback	186 VAC @ 100% of the load 120 VAC @ 50% of the load	
	High Line transfer	300 VAC	
	High Line comeback	290 VAC	
Frequency Range	46~54 Hz © 50Hz / 56~64 Hz © 60Hz		
Phase	Single phase with ground		
Power Factor P.F.	≤ 0.99 @ 100% of the load		
OUTPUT			
AC Voltage regulation (Batt. Mode)		± 1%	
Frequency Range (Synchronized)		46~54 Hz © 50 Hz / 56~64 Hz © 60 Hz	
Frequency Range (Batt. Mode)		50 Hz ± 0.1 Hz or 60 Hz ± 0.1 Hz	
Crest current ratio		3:1	
Harmonic distortion		≤ 2 % THD (linear load) ≤ 46 % THD (no-linear load)	
Transfer time	AC mode to battery mode	Zero	
	Inverter to bypass	Zero	
Wave form (Batt. Mode)		Pure Sine wave	
EFFICIENCY			
AC Mode		94%	
Battery Mode		91%	
BATTERY			
Standard Model	Battery Type	12 V / 7 AH	12 V / 9 AH
	Numbers	20	20
	Typical recharging time	7 hours 90% capacity	9 hours 90% capacity
	Charging current (max.)	1.0 A @ 4.0 A	
Charging Voltage		273.0 VDC	
(S) long autonomy model	Battery Type	It depends on the capacity of the external batteries according to the required autonomy	
	Numbers		
	Typical recharging time	4.0 A	
	Charging current (max.)	273.0 VDC	
INDICATORS			
LCD Panel		UPS Status, Load Level, Battery Level, Input/Output Voltage, Bounce Time, Fault Condition	
ALARMS			
Battery mode		Sounds every 4 seconds	
Low battery		Sounds every 2 seconds	
Overload		Double sound every second	
Fault		Continuous sound	
DIMENSIONS AND WEIGHTS			
Standard Model	Dimensions P x L x H (mm)	592 X 250 X 576	
	Net weight (kg)	81	83
(S) Long Run model	Dimensions, P x L x H (mm)	592 X 250 X 576	
	Net weight (kg)	22	24
ENVIRONMENTAL DATA			
Operating Humidity		20-90 % RH @ 0- 40°C (without condensation)	
Noise		< 55dB @ 1 Metro	< 58dB @ 1 Metro
INTERFACE			
Smart RS-232		Windows family, Novell, Linux and FreeBSD	
USB			
Optional SNMP			
		Power management per SNMP manager e web browser	

* (S) Identifies lon-lasting models

* Product specifications may be subject to change without notice

ERT1 – GALAXY 1 RT

ON-LINE Statics UPS
Double conversion to sinusoidal wave
CONVERTIBLE RACK / TOWER



UPS

**On-Line single phase
Sinusoidal pure wave**

ERT1

- GALAXY1 RT



The ERT1-GALAXY1RT series, convertible in RACK/TOWER is available in the 1KVA to 10KVA power with On-Line double digital control conversion technology ; This series, for its versatility, is suitable for powering any electrical and electronic system even in critical situation, as well as being able to use it as / Hz frequency converter or using power generators



FEATURES

1000 – 1500 - 2000 - 3000 VA

• DOUBLE CONVERSION UPS

A real DOUBLE CONVERSION UPS that will provide a perfect current, for complete high quality protection for your sensitive devices, such as Network, Small Calculation Centers, Servers, Telecommunications, Healthcare/Hospital Appliances and industrial application in general

• OUTPUT POWER FACTOR ϕ 1.0

Comparing this UPS ON-LINE line with current marketing competition, we can say that GALAXY1 RT UPSs have the best output power factor 1,0. They offer high performance and efficiency for critical applications.

•LARGE INPUT RANGE (110 V -300 V)

Galaxy RT is able to provide stable and clean current to the equipment also connected in very critical and unstable environments.

•Hot replacement batteries (only for 1-3KVA)

Galaxy RT can provide stable and clean current to the equipment also during the battery changing



6 – 10 KVA



•PROGRAMMABLE OUTPUTS

With programmable outputs sockets, the user can easily control part of the load connected to the UPS. During power outages, this feature allows the user to increase battery autonomy and dedicate it to the exclusive protection of some critical appliances, interrupting power supply to non-essential



Programmable sockets (P1)
- connect non-essential devices

•50/60Hz FREQUENCY CONVERTER FUNCTION

Blocks the output frequency at 50Hz or 60Hz regardless of the input frequency and delates the By-Pass

•Emergency Power Off (EPO) FUNCTION

This function serves to the shutdown of the UPS from the staff in case of fire and other situation of emergency.

•SNMP+USB+RS-232 MULTIPLE COMMUNICATIONS

This function allows to use the communication from all USB, RS-232 and SNMP ports simultaneously.

• BATTERY CHARGER STUDIED FOR OPTIMIZE THE PERFORMANCE OF BATTERIES.

The GALAXY 1-3K series is equipped with a 2 steps battery charger for maximum autonomy. It also regulated the charging voltage according to working temperature. All these features have been designed to extend the life of the batteries assembled in the UPS.

. UPS GALAXY RT 6-10K are equipped with a 3 steps extensible battery charger to optimize battery performance. This feature extends the autonomy and optimizes the battery recharging time, and the

battery charge extension is also essential for recharging the batteries with the highest power used to gain long autonomy.

• MANUAL BY-PASS FOR THE MAINTENANCE ON UPS FROM 6K

Manual By-Pass, ensures the lack of voltage inside of the UPS for maintenance, ensuring power to the connected equipment.

• REDUNDANT PARALLEL OPERATION FOR UPS FROM 6K TO 10K

The GALAXY RT 6K, can work in parallel redundant up to 3 units, which increases power capability, uninterrupted service safety.

• RACK / TOWER design

The GALAXY RT series are UPS convertible models, they can be installed in RACK 19” and TOWER with simple rotation of LCD display, ideal for backups power protection solutions for servers, rescue systems, Network equipment, and other types of loads.

• Power Factor Correction untill a 0,99

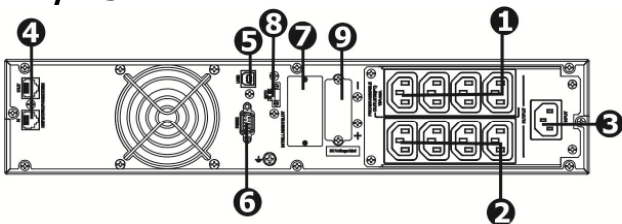
The PFC improbe the quality of the absorbed current and increases the energy yeld, with the consequent economics saving.

COMMUNICATION

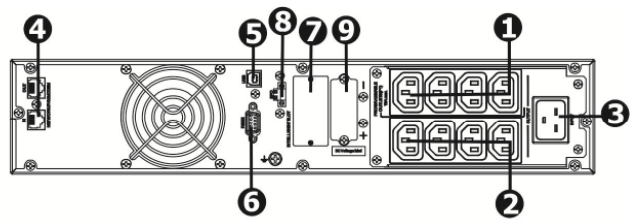
Software Series for all operating systems and network environments, UPSILON 2000 Supervision and shutdown platform.

WARRANTY 24

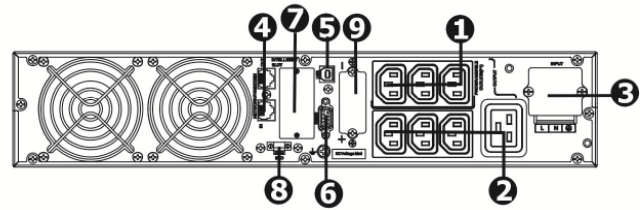
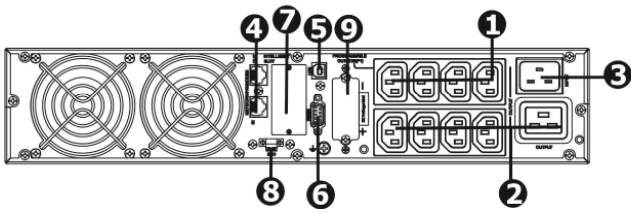
1K/1.5K



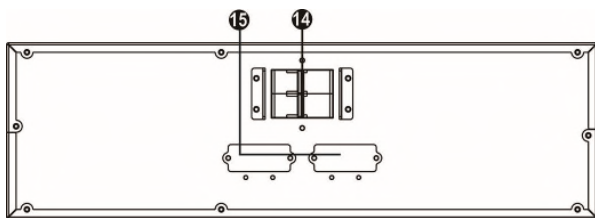
2K



3K

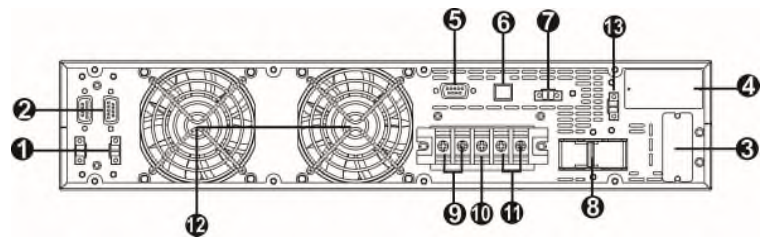


1. Programmable outlets: connect to non-critical loads.
2. Output receptacles: connect to mission-critical loads.
3. AC input
4. Network/Fax/Modem surge protection
5. USB communication port
6. RS-232 communication port
7. SNMP intelligent slot
8. Emergency power off function connector (EPO)
9. External battery connection



3U battery pack

UPS Rear Panel



- 1) Share current port (only available for parallel model)
- 2) Parallel port (only available for parallel model)
- 3) External battery connector
- 4) Intelligent slot
- 5) RS-232 communication port
- 6) USB communication port
- 7) Emergency power off function connector (EPO connector)
- 8) Input circuit breaker
- 9) Output terminals
- 10) Ground
- 11) Input terminals
- 12) Cooling Fan
- 13) External maintenance bypass switch port
- 14) Battery pack output circuit breaker
- 15) External battery connector

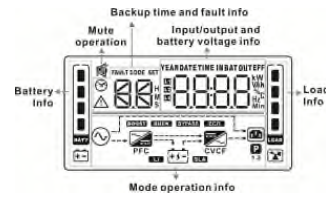


ERT1 1K/1,5K/2K/3K single phase ONLINE UPS DOUBLE CONVERSION Convertible Rack/Tower

MODEL		ERT1 1K	ERT1 1,5K	ERT1 2K	ERT1 3K
POWER		1000 VA / 1000 W	1500 VA / 1500 W	2000 VA / 2000 W	3000 VA / 3000 W
INPUT					
Voltage Range	Nominal tension	200/208/220/230/240 Vac			
	Tension range	110-300Vac ± 5% @ 50% del carico 160-300Vac ± 5% @ 100% del carico			
	Low line comeback	170 VAC ± 5 %			
	High line comeback	290 VAC ± 5 %			
Frequency range		40 Hz ~ 70 Hz ± 5%			
Phases		Single phase with neutral			
Power factor P. F.		≥ 0.99 @ Nominaol tension (carico 100%)			
OUTPUT					
Voltage output tension		200/208/220/230/240 Vac			
AC voltage regulation(Batt. Mode)		± 1%			
Frequency Range (Synchronized)		47Hz ~ 53 Hz o 57Hz ~ 63 Hz			
Frequency Range (Batt. Mode)		50 Hz ± 0.1 Hz or 60Hz ± 0.1 Hz			
Crest current Ratio		3:1			
Harmonic distortion		≤ 2 % THD (lineare load) ≤ 4 % THD (no- linear load)			
Transfer Time	AC Mode to Battery Mode	Zero			
	inverter to bypass	4 ms (Typical)			
Wave form (Batt. Mode)		Pure sinewave			
EFFICIENCY					
AC mode		89%		91%	
Battery mode		~ 88 - 90%			
BATTERY					
Standard Model	Battery Type	12 V / 9 Ah	12 V / 9 Ah	12 V / 9 Ah	12 V / 9 Ah
	Number	2	3	4	6
	Typical charging time	4 hours to 90% of capacity			
	Charge current (max.)	2A @ 12A adjustable			2A @ 8A adjustable
	Charging Voltage	27,4Vdc ± 1%	41,1Vdc ± 1%	54,8Vdc ± 1%	82,1Vdc ± 1%
INDICATORS					
LCD Panel		UPS Status, Load Level, Battery Level, Input/Output Voltage, Bounce Time, Fault Condition			
ALLARM					
Battery mode		Sounds every 5 seconds			
Low battery		Sounds every 2 seconds			
Overload		Sound every second			
Fault		Continuous sound			
DIMENSIONS AND WEIGHTS					
Standard Model	DimensionsP x L x H (mm)	410 x 438 x 88	410 x 438 x 88	510 x 438 x 88	630 x 438 x 88
	Net weight(kg)	12	15	20	28
(S) long autonomy Model	DimensionsP x L x H (mm)	410 x 438 x 88	410 x 438 x 88	510 x 438 x 88	510 x 438 x 88
	Net weight(kg)	7	8	10	13
ENVIRONMENTAL DATA					
Operating humidity		20-90 % RH @ 0- 40°C (without condensation)			
Noise		< 50dBA @ 1 Metro			
INTERFACE					
Smart RS-232/USB		Windows family, Linux , Unix , MEC			
Optional SNMP		Power management per SNMP manager e web browser			

* (S) Identifies lon-lasting models

* Product specifications may be subject to change without notice



ERT1 6K/10K single phase ONLINE UPS DOUBLE CONVERSION Convertible Rack/Tower			
MODEL		ERT1 6K	ERT1 10K
POWER		6 KVA / 6 KW	10 KVA / 10 KW
INPUT			
Voltage Range	Nominal tension	200/208/220/230/240 Vac	
	Tension range	110-300Vac ± 5% @ 50% del carico 176-300Vac ± 5% @ 100% del carico	
	Low line comeback	170 VAC ± 5 %	
	High line comeback	290 VAC ± 5 %	
Frequency range		46~54 Hz @ 50Hz / 56~64 Hz @ 60Hz	
Phases		Single phase with neutral	
Power factor P. F.		≥ 0.99 @ Nominaol tension (carico 100%)	
Harmonic distortion		< 4% @ 100% del carico, < 6% @ 50% del carico	
OUTPUT			
Voltage output tension		200/208/220/230/240 Vac	
AC voltage regulation(Batt. Mode)		± 1%	
Frequency Range (Synchronized)		46Hz ~ 54 Hz o 56Hz ~ 64 Hz	
Frequency Range (Batt. Mode)		50 Hz ± 0.1 Hz or 60Hz ± 0.1 Hz	
Crest current Ratio		3:1	
Harmonic distortion		≤ 12 % THD (carico lineare) ≤ 4 % THD (carico non lineare)	
Transfer Time	AC Mode to Battery Mode	Zero	
	inverter to bypass	Zero	
Wave form (Batt. Mode)		Pure sinewave	
EFFICIENCY			
AC mode		94%	
Battery mode		92%	
BATTERY			
Standard Model	Battery Type	12 V / 7 AH	12 V / 9 AH
	Number	20	20
	Typical charging time	7 hours to 90% of capacity	94 hours to 90% of capacity
	Charge current (max.)	1.0 A @ 4.0 A	
Charging Voltage		273.0 VDC	
INDICATORS			
LCD Panel		UPS Status, Load Level, Battery Level, Input/Output Voltage, Bounce Time, Fault Condition	
ALARMS			
Battery mode		Sounds every 5 seconds	
Low battery		Sounds every 2 seconds	
Overload		Sound every second	
Fault		Continuous sound	
DIMENSIONS AND WEIGHTS			
Standard Model	DimensionsP x L x H (mm)	UPS - 610 X 438 X 88 (2U) Battery pack - 600 X 438 X 133 (3U)	UPS - 610 X 438 X 88 (2U) Battery pack - 600 X 438 X 133 (3U)
	Net weight(kg)	17 + 57	20 + 63
(S) long authonomy Model	DimensionsP x L x H (mm)	610 X 438 X 88 (2U)	610 X 438 X 88 (2U)
	Net weight(kg)	17	20
ENVIRONMENTAL DATA			
Operating humidity		20-90 % RH @ 0- 40°C (without condensation)	
Noise		< 58dBA @ 1 Metro	< 60dB @ 1 Metro
INTERFACE			
Smart RS-232/USB		Windows family, Linux , Unix, MEC	
Optional SNMP		Power management per SNMP manager e web browser	

* (S) Identifies lon-lasting models

* Product specifications may be subject to change without notice

EGL 3T

ON-LINE Statics UPS
double conversion to sinusoidal wave
THREE PHASE/SINGLE PHASE



UPS

On-Line three phase / single phase

Sinusoidal pure wave

EGL 3T

GALAXY 3T



10 – 20 KVA

The EGL 3T – GALAXY 3T series is available in 10 KVA and 20 KVA power with dual-conversion digital control on-line technology; This series, for its versatility, is suitable for powering any electrical and electronic system even in critical situations, as well as being able to be used as a 50/60Hz frequency converter or using power generators.

FEATURES

• DOUBLE CONVERSION UPS

A real DOUBLE CONVERSION UPS that will provide a perfect current, for complete high quality protection for your sensitive devices, such as Network, Small Calculation Centers, Servers, Telecommunications, Healthcare/Hospital Appliances and industrial application in general

• OUTPUT POWER FACTOR ϕ 0.8

Comparing this UPS ON-LINE line with current marketing competition, we can say that GALAXY UPSs have the best output power factor 0,8 They offer high performance and efficiency for critical applications.

• LARGE INPUT RANGE (110 V -300 V)

Galaxy is able to provide stable and clean current to the equipment also connected in very critical and unstable environments

•PROGRAMMABLE OUTPUTS

With programmable outputs sockets, the user can easily control part of the load connected to the UPS. During power outages, this feature allows the user to increase battery autonomy and dedicate it to the exclusive protection of some critical appliances, interrupting power supply to non-essential equipment.



Programmable sockets (P1)
- connect non-essential devices

• 50/60 Hz FREQUENCY CONVERTER FUNCTION

Blocks the output frequency at 50Hz or 60Hz regardless of the input frequency and delates the By-Pass

• Emergency Power Off (EPO) FUNCTION

This function serves to the shutdown of the UPS from the staff in case of fire and other situation of emergency.

• SNMP+USB+RS-232 MULTIPLE COMMUNICATIONS

This function allows to use the communication from all USB, RS-232 and SNMP ports simultaneously.

• BATTERY CHARGER STUDIED FOR OPTIMIZE THE PERFORMANCE OF BATTERIES.

The GALAXY 1-3K series is equipped with a 2 steps battery charger for maximum autonomy. It also regulated the charging voltage according to working temperature. All these features have been designed to extend the life of the batteries assembled in the UPS.

. UPS GALAXY 6-20K are equipped wit a ica batterie a 3 steps extensible battery charger to optimize battery performance. This feature extends the autonomy and optimizes the battery recharging time, and the battery charge extension is also essential for recharging the batteries with the highest power used to gain long autonomy.

• MANUAL BY-PASS FOR THE MAINTENANCE ON UPS FROM 6K FORWARD

Manual By-Pass, ensures the lack of voltage inside of the UPS for maintenance, ensuring power to the connected equipment.

• REDUNDANT PARALLEL OPERATION

The GALAXY 3T, can work in parallel redundant up to 3 units, which increases power capability, uninterrupted service safety.

• Power Factor Correction ON ALL THREE/SINGLE PHASE 10KVA TO 20KVA

The PFC improbe the quality of the absorbed current and increases the energy yeld, with the consequent economics saving.

COMMUNICATION

Software for all operating systems and network environments, UPSILON 2000 Supervision and Shutdown platform.

WARRANTY 24 MONTHES



EGL 3T 10K/20K three phase/single phase ONLINE UPS DOUBLE CONVERSION

MODEL		EGL 3T-10K (S)	EGL 3T-20K (S)
PHASE		THREE PHASE INPUT/SINGLE PHASE OUTPUT	
POWERS		10000 VA / 9000 W	20000 VA / 18000 W
INPUT			
Voltage Range	Low Line transfer	176 VAC @ 100% of the load 110 VAC @ 50% of the load	
	Low Line comeback	186 VAC @ 100% of the load 120 VAC @ 50% of the load	
	High Line transfer	300 VAC	
	High Line comeback	290 VAC	
Frequency Range		46~54 Hz © 50Hz / 56~64 Hz © 60Hz	
Phase		Three phase with ground	
Power Factor P.F.		□ 0.99 @ 100% of the load	
OUTPUT			
AC Voltage regulation (Batt. Mode)		± 1%	
Frequency Range (Synchronized)		46~54 Hz © 50 Hz / 56~64 Hz © 60 Hz	
Frequency Range (Batt. Mode)		50 Hz ± 0.1 Hz or 60 Hz ± 0.1 Hz	
Crest current ratio		3:1	
Harmonic distortion		□ 2 % THD (linear load) □ 6 % THD (non linear load)	
transfer Time	AC mode to Battery Mode	Zero	
	inverter to bypass	Zero	
Wave form (Batt. Mode)		Pure sinewave	
EFFICIENCY			
AC mode		90%	
Battery mode		88%	
BATTERY			
Standard Model	Battery Type	12 V / 9 AH	12 V / 9 AH
	Numbers	20	40
	Typical recharging time	7 ore 90% capacità	9 ore 90% capacità
	Charge current (max.)	1.0 A	2.0 A
	Charging Voltage	273.0 VDC	
(S) long autonomy model	Battery Type	It depends on the capacity of the external batteries according to the required autonomy	
	Numbers		
	Typical recharging time	4.0 A	8.0 A
	Charge current (max.)	273.0 VDC	
INDICATORS			
LCD Panel		UPS Status, Load Level, Battery Level, Input/Output Voltage, Bounce Time, Fault Condition	
ALARMS			
Battery mode		Sounds every 4 seconds	
Low battery		Sounds every second	
Overload		Double sound every second	
Fault		Continuous sound	
DIMENSIONS AND WEIGHTS			
Standard Model	Dimensions P x L x H (mm)	592 X 250 X 576	862 X 250 X 826
	Net weight (kg)	83	139
(S) Long run. model	Dimensions, P x L x H (mm)	592 X 250 X 576	
	Net weight (kg)	24	37
ENVIRONMENTAL DATA			
Operating Humidity		20-90 % RH @ 0- 40°C (without condensation)	
Noise		< 45dBA @ 1 Metro	< 60dB @ 1 Metro
INTERFACE			
Smart RS-232		Windows family, Novell, Linux and FreeBSD	
USB			
Optional SNMP			
		Power management per SNMP manager e web browser	

* (S) Identifies lon-lasting models

* Product specifications may be subject to change without notice